

**IODP Workshop: Developing Scientific Drilling Proposals for the Argentina Passive  
Volcanic Continental Margin (APVCM) -  
*Basin Evolution, Deep Biosphere, Hydrates, Sediment Dynamics and Ocean Evolution***

**Roger D. Flood<sup>1</sup>, Roberto A. Violante<sup>2</sup>, Thomas Gorgas<sup>3</sup>, Ernesto Schwarz<sup>4</sup>, Jens Grützné<sup>5</sup>,  
Gabriele Uenzelmann-Neben<sup>5</sup>, F. Javier Hernández-Molina<sup>6</sup>, Jennifer Biddle<sup>7</sup>, Guillaume  
St-Onge<sup>8</sup> and APVCM Workshop Participants<sup>9</sup>**

**Abstract**

The Argentine Margin contains important sedimentological, paleontological and chemical records of regional and local tectonic evolution, sea-level, climate evolution and ocean circulation since the opening of the South Atlantic in the Late Jurassic–Early Cretaceous as well as the present-day results of post-depositional chemical and biological alteration. Despite its important location which underlies the exchange of southern and northern sourced water masses, the Argentine Margin has not been investigated in detail using scientific drilling techniques, perhaps because the margin has the reputation as being erosional. However, a number of papers published since 2009 report new high-resolution and/or multichannel seismic surveys, often combined with multi-beam bathymetric data, which show the common occurrence of layered sediments and prominent sediment drifts on the Argentine and adjacent Uruguayan margins. There has also been significant progress studying the climatic records in surficial and near-surface sediments recovered in sediment cores from the Argentine margin. Encouraged by these recent results, our 3.5-day IODP workshop in Buenos Aires (8-11 September 2015) focused on opportunities for scientific drilling on the Atlantic margin of Argentina which lies beneath a key portion of the global ocean conveyor belt of thermohaline circulation. Significant opportunities exist to study the tectonic evolution, paleoceanography and stratigraphy, sedimentology, and biosphere and geochemistry of this margin.

**Introduction**

The Argentine Continental Margin (ACM), one of the largest margins worldwide, is a complex geological feature where geotectonic evolution, as well as the post ocean-opening history, configured three types of margins (Figure 1): passive volcanic rifted (red line), transcurrent (orange line) and mixed convergent and sheared (yellow line). Apart from its implications for the evolution of the Southern Ocean, the ACM constitutes a key region in the global oceanographic-climatic system as it is the only place in the Southern Ocean with a net water-mass exchange between the equatorial and southern polar region (Figure 2). Strong Antarctic-sourced currents run along the Argentine margin, driven by the Coriolis force, from 56°S and reaching to at least 34°S, or even farther north. Also, waters of Northern Hemisphere origin flow south along the Argentine Margin north of about 38°S. The ACM evolution has been affected by climate, current, sea-level, and tectonic processes, as well as by sediment input patterns and history along the roughly 5,000 km long coast line of Argentina. All of these characteristics, coupled with the fact that this is a critically important, yet under-sampled portion of the World Ocean, makes the ACM an important region for using IODP scientific drilling to explore and discover the potential benefits of such operations within the “passive” sector of the margin (called here the Argentine Passive Volcanic Continental Margin -- APVCM).

### **Workshop Event, Topics, Sponsorship and Seismic Data**

The IODP Workshop Event: *Developing Scientific Drilling Proposals for the Argentina Passive Volcanic Continental Margin (APVCM) - Basin Evolution, Deep Biosphere, Hydrates, Sediment Dynamics and Ocean Evolution*, was held in Buenos Aires on 8–11 September 2015. The 3.5-day event was conducted in the Ministerio de Relaciones Exteriores Comercio Internacional y Culto (Ministry of Foreign Affairs, International Trade and Worship) in the City of Buenos Aires, comprising 45 scientists from 8 countries and 34 organizations or institutions, who discussed scientific drilling on the APVCM (Figure 1) to determine the composition of and reconstruct the history of the sedimentary deposits under the impact of climatic and tectonic events. Breakout discussion groups were dedicated to Tectonics, Paleoceanography/Sedimentology/Seismic Stratigraphy, and Deep-Earth Life Forms/Biosphere/Geochemistry.

The workshop aimed to bring together a diverse group of scientists to explore and discover the merits of and thereby develop a strategy for scientific drilling operations on the APVCM. The goal of a scientific drilling campaign along and across the APVCM is to significantly contribute to our understanding of the evolution of the South Atlantic and its role and influence on global ocean circulation and climate history of our planet. Sediments on the APVCM margin range from Late Jurassic-Cretaceous to Holocene in age, and depositional units from approximately the Eocene to Pliocene are particularly well developed. Records from this margin obtained through scientific drilling will be important to resolve key questions of the evolution of Earth's oceans and climate through this period.

IODP Workshop Topics were introduced to the audience through key note presentations on:

- ✓ Evolution of the Southwestern Atlantic Ocean.
- ✓ Structure of the APVCM.
- ✓ Nature and timing of rifting and thermal evolution of the margin.
- ✓ Nature of sedimentary processes and facies that shaped the margin.
- ✓ Margin construction, stability and evolution.
- ✓ Climate records, ocean circulation and paleoceanography.
- ✓ History and character of surface and deep circulation along the Argentine margin.
- ✓ Opportunities for deep biosphere studies on a complex passive margin.
- ✓ Data needs for IODP proposals, the capabilities of the R/V JOIDES Resolution and the IODP proposal process.

Workshop Sponsorship was provided by the National Science Foundation U.S. Science Support Program (USSSP), Argentina's Ministry of Science, Technology and Productive Innovation (MINCYT-CONICET), the Argentine Ministry of Foreign Affairs, COPLA (National Commission of the Outer Limit of the Shelf - CONVEMAR), the Pampa Azul Initiative, YPF S.A. (Argentina's National Petroleum Company), and CIG (Geological Research Center, University of La Plata - CONICET), Argentina. This was also a European Consortium for Ocean Research Drilling (ECORD) MagellanPlus Workshop.

Seismic data is particularly important for planning and executing scientific drilling programs and for the Argentine Margin it is appropriate to mention early in this report the three significant seismic data sets were shown and discussed at the workshop. A primary data set for the Argentine Margin consists of mostly dip lines collected by BGR (Bundesanstalt für Geowissenschaften und Rohstoffe) in Hannover, Germany. A second primary data set consists of the primarily dip seismic lines collected by COPLA which build on the BGR lines by extending the BGR lines offshore and by filling between the BGR lines where they are widely spaced. The COPLA lines were collected in support of Argentina's application to set the outer limit of the Argentine continental shelf and there will be limited access to these lines at least until that process has been concluded. Workshop organizers met with members of COPLA several times before the workshop to discuss the goals of the IODP workshop and the kind of data needed to support IODP scientific drilling. We were told that portions of the lines were expected to be available to support scientific drilling on a case-by-case basis. Indeed, four potential drill sites were proposed during the meeting based on the COPLA lines, and a pre-proposal currently active in the IODP system uses COPLA and BGR lines to define two potential sites (903-Pre, Figure 3). The ArgentineSPAN-(TM) lines collected on the Argentine margin by ION Geophysical, Inc. was the third set of lines that was presented and discussed. These deep-penetration, proprietary lines are both strike lines and dip lines, and may also be available to support scientific drilling. Indeed, 911-Pre uses ArgentineSPAN-(TM) and BGR lines to define several sites. Other important data sets may exist on the margin, but they were not discussed at this meeting.

## **Background and Geological Setting**

The Argentine Margin contains important sedimentological, paleontological and chemical records of regional and local tectonic evolution, sea-level, climate evolution and ocean circulation that date from the opening of the South Atlantic in the Late Jurassic–Early Cretaceous as well as of the present-day results of post-depositional chemical and biological alteration. Despite its important location which underlies the exchange of southern and northern sourced water masses, the Argentine Margin has not been investigated in detail using scientific drilling techniques (Fig. 1). This low level of scientific drilling activity in the region may in part

be due to the reports of Maurice Ewing and co-workers (e.g., Lonardi and Ewing, 1971), which, based on widely spaced and low-resolution seismic profiles, noted that the margin had an erosional character as it was crossed by numerous large canyon systems, some of which were likely altered by strong currents. However, a number of papers published since 2009 report new high-resolution and/or multichannel seismic surveys (Figure 4), often combined with multi-beam bathymetric data, which show the common occurrence of layered sediments and prominent sediment drifts on the Argentine and adjacent Uruguayan margins (e.g., Hernández-Molina et al., 2009; 2010; 2015; Violante et al., 2010; Krastel et al., 2011; Lastras et al., 2011 and Muñoz et al., 2012; Grützner et al., 2011; 2012; 2016; Preu et al., 2012; 2013; Voigt et al., 2013; Uenzelmann-Neben et al., 2016; see also Hinz et al., 1999). There has also been significant progress studying the climatic records in surficial and near-surface sediments recovered in sediment cores from the Argentine margin (e.g., Chiessi et al., 2007; Bozzano et al. 2011; Govin et al. 2012; Bender et al., 2013; Razik et al., 2013; Razik, 2014; García Chaporí et al., 2014; 2015) demonstrating that this margin also contains important modern sedimentary deposits.

Encouraged by these recent results, our 3.5-day IODP workshop in Buenos Aires (8-11 September 2015) focused on opportunities for scientific drilling on the APVCM as a significant contribution to several of IODP's research themes described in the program's Science Plan (IODP-SP) "Illuminating Earth's Past, Present and Future" (<http://www.iodp.org/program-documents>). Future drilling in this region is likely to be of high priority because this margin lies beneath a key portion of the global ocean conveyor belt of thermohaline circulation (Broecker, 1991).

Interest is high in the southern South Atlantic Ocean, and there is much now being learned about the details of the evolution of this key ocean basin (Torsvik et al, 2009; Moulin et al., 2010; Heine et al., 2013; Granot and Dymant, 2015). The rift phase of the Gondwana breakup extended from the Triassic/Jurassic(?) to the Early Cretaceous. Seaward Dipping Reflectors (SDRs) are observed on seismic profiles near the continental-ocean boundary (COB) indicating the presence of massive volcanism (a large igneous province, or LIP) at the transition from rifting to drifting (Gladchenko et al., 1997; Hinz et al., 1999). The volcanic layers which make up the SDRs may be subaerial

and interbedded with terrestrial sediments. Slumps are observed in the prograding Cretaceous sediment off the Colorado Basin that may thin the sediments over SDRs in some areas. Cretaceous shelf sediments here are expected to be black shales, sandstones and coarser-grained deposits (Loefering et al., 2013) while Cretaceous sediments in deeper water are likely to be pelagic shales, marls and fine-grained sands (R. Gerster, personal communication, 2015). At about 95 Ma the Equatorial Atlantic Gateway opened, and the gateway continued to enlarge allowing enhanced exchange of southern waters with the North Atlantic Basin, perhaps leading to a global cooling of bottom water and the end of the Cretaceous greenhouse period (Friedrich et al., 2012; Granot and Dymant, 2015). However, basin-to-basin differences in water properties are not well resolved, including the character of the South Atlantic waters that flooded the North Atlantic Basin (Friedrich et al., 2012).

Hernandez-Molina et al. (2010) and Grützner et al. (2012) suggest that sediments from about the Cretaceous/ Tertiary boundary to the Eocene/ Oligocene boundary are thick along the margin and are characterized by being parallel to sub-parallel reflections of low to moderate amplitude. This is generally a time of low to moderate bottom current activity and a warm climate.

Lastras et al. (2011) and Munoz et al. (2012) sampled relatively thick sections of fine-grained Eocene sediments at about 45°S to 47°S outcropping at water depths of from 900 to 2500 m in the walls of large canyons. Eocene sediments found in cores from this section of the slope consist of benthic diatoms to the south and a carbonate facies to the north. Ewing and Lonardi (1971) also noted the presence of Eocene sediments in this region of large canyons, and canyons on the southern Argentine margin which may be particularly well developed because they are cut into thick, fine-grained Eocene sediments by persistent, strong currents. cursory analysis of the ArgentineSPAN-(TM) seismic lines in the area suggest that these layered sediments also exist in somewhat shallower water south of the zone of canyons.

Hanna et al. (1976) and Ross (1976) described several new, unreworked Eocene diatom species from Vema cores collected in this area. Core VM12-46 at 47.483S, 59.35W, water depth 1167 m, described by D. Ericson and available on GeoMapApp (<http://www.geomapapp.org>), contains a fine-grained Eocene sediment with abundant coccoliths, diatoms, silico-flagellates, radiolarian and sponge spicules as well as common benthic foraminifera.

Eocene sediments on the upper slope are overlain by a prominent but now buried sediment drift in deep water of likely Oligocene to Early Late Miocene age (Figure 4; the "giant drift" of Hernandez-Molina et al. (2010) and Grützner et al. (2012)). This drift is buried to the west by the flanks of younger and shallower deposits (termed "mounded drifts") of Middle to Late Miocene age which developed sequentially within the south-central portion of the Argentine margin. Sediments of likely Pliocene to the Holocene age overlay the mounded drifts, although they are often more localized. These younger sediments are generally interpreted as drifts, perhaps associated with the levees of channels, or deposits within channels, where the channels intersect flow along the margin. Drifts are also present farther north along the margin (e.g., Hernandez-Molina et al., 2015) with drifts apparently associated with flows of Antarctic Intermediate Water (AAIW), Upper Circumpolar Deep Water (UCDW), North Atlantic Deep Water (NADW), Lower Circumpolar Deep Water (LCDW) and Antarctic Bottom Water (AABW).

Violante et al. (2010) and Grützner et al. (2011; 2012; 2016) suggest that increased sediment flux to the margin during the Miocene may in part be related to uplift in the Andes that in turn is due to increased Miocene Pacific Ocean crustal spreading and subduction rates which peaked at about 10 to 20 Ma (Pardo-Casas and Molnar, 1987; Martinod et al., 2010). However, the routes or processes by which Andean sediments reach the margin and are redistributed within the margin are not well understood.

The shift in deposition from primarily shallow-water Eocene sediments to deep-water, drifted Oligocene sediments appears to mark the deepening of the Antarctic Circumpolar

Current (ACC) in the Oligocene (Katz et al., 2011) and the first entry of northward-flowing deep waters into the Argentine Basin (Uenzelmann-Neben et al., 2016 (in press)). The establishment of a shallow ACC in the Eocene played an important role in isolating Antarctica and allowing the growth of continental ice sheets (Katz et al., 2011), and the thick, shallow-water (now the upper slope) Eocene sediments described along the southern Argentine margin may have accumulated in response to the formation of a shallow ACC and associated shallow northward flow along the Argentine margin. The ACC apparently strengthened and deepened into the Oligocene as the Tasman Gateway and then the Drake Passage deepened, leading to the development of the modern four-layer structure as well as deep northward flow in the Argentine Basin (Katz et al., 2011; Figures 2 and 4).

The middle–late Miocene is a particularly important time in terms of climate history and global ocean circulation. During the early Miocene the Antarctic Ice Sheet (AIS) appears to have fluctuated in size, with concomitant changes in sea level of about  $\pm 20$  m (e.g., Foster et al., 2012). The middle Miocene was characterized by the Mid-Miocene Climatic Optimum (MCO), which extends from about 17 to 15 Ma. This was a time of reduced AIS volume (~10-25% of the modern AIS), high  $p\text{CO}_2$  (up to ~450 ppm) and global temperatures warmer than today. Following the MCO, more complex oceanic circulation patterns developed during the middle Miocene Climatic Transition (MMCT) from about 14.2 to 13.8 Ma. Possible important events that occurred at that time include the emplacement of large volcanic complexes (such as the Columbia River Basalts, CRB), which would have affected  $p\text{CO}_2$  (Armstrong McKay et al., 2014), the Andean uplift with an impact on atmospheric circulation and weathering patterns (Violante et al., 2010; Grützner et al., 2011 and 2012), and the closing of the Tethys seaway, which changed global ocean circulation patterns (Hamon et al., 2013). Climate deterioration continued into the late Miocene leading to the initiation and growth of the West Antarctic Ice Sheet (Shevenell et al., 2004). Climatic deterioration has continued into the Pleistocene although the major current systems that were established between the end of the Miocene and the Late Pliocene appear to have continued to the present day (Hernández-Molina et al., 2009; Preu et al., 2012, 2013). However, factors other than ocean currents have also been important to the development of the margin, including sea level change, climate variability and Andes glaciation



and uplift (Violante et al., 2010; Grützner et al, 2011 and 2012). These kinds of factors can also control the timing, locations and rates of sediment input which can also affect margin evolution.

### **Drilling to investigate the tectonic, paleoceanographic, sedimentation, and biosphere history of the APVCM -- Recommendations from the Workshop**

Workshop participants agreed that scientific ocean drilling off Argentina (both in deep and shallow water) will contribute to the understanding of the role that the southern region has played in climate evolution and associated processes and will provide opportunities for focused studies.

The APVCM provides outstanding targets for investigating sedimentation and paleo-oceanographic conditions from the Cretaceous to the Holocene. The unique setting in the target region is linked to the tectonic evolution of Antarctica, the Southern and South Atlantic Oceans, and the Andes. Specific questions and hypotheses were discussed in groups regarding several main sub-topics, including:

- **Tectonic Evolution**: One sub-topic discussion group was focused on developing a strategy to identify targets which highlight the opening of the South Atlantic and allow testing the various models for the break-up of Gondwana and emplacement of shear zones, for example as expressions of transcurrent boundaries. Seaward dipping reflectors (SDRs) and associated magnetic/gravity anomalies are important volcanic and geophysical features that can constrain geo-tectonic models of the opening of the South Atlantic and the evolution of its margins. We need to better understand the structure, fragmentation and thermal evolution of SDRs which can be identified in seismic lines. We need to collect in-situ samples for age dating and we need to determine the likely depths of events related to SDR emplacement and evolution. We also need to better characterize the geochemical composition and mineralogy of the SDR layers to better resolve their emplacement and thermal evolution. Drilling and sampling the SDRs of the Argentina Basin (Deep-Water realm of the APVCM) will allow us to address the

following scientific objectives related to *Challenges 8, 9 and 10* of the *Earth Connections Theme* in the *IODP Science Plan 2013–2023 (IODP-SP)*:

- *What is the age and composition of the SDRs?*
- *What was the source of magma (asthenosphere vs. deep mantle plumes) for the initial melts emplaced during early opening of the South Atlantic and what does this tell us about models of continental rifting/fragmentation?*
- *What was the nature of magma and continental crust interactions during SDR emplacement and what does this indicate about crustal anatexis, crustal lithology, and composition of gases delivered to the ocean and/or atmosphere during emplacement?*
- *How has the structural, tectonic and thermal evolution of the margin influenced the both large-scale and local sedimentation patterns on the margin over time?*

- **Paleoceanography and Stratigraphy**: This sub-group engaged in a discussion of the opening of the South Atlantic and how the changing configuration of the ocean basins and distribution of landmasses affected the evolution of the ocean and climate. Since the age of the APVCM allows one (in theory) to tap into sediments back as far as the middle Late Cretaceous, it may be possible to sample sediments which record the successive oceanic-anoxic events (OAEs) which occurred during the mid-Cretaceous “Super Greenhouse” (Aptian-Turonian), a time with characteristically high atmospheric CO<sub>2</sub> concentrations and very warm deep-ocean and polar surface temperatures. These kinds of records from this region (and time period) exist (e.g. DSDP (Deep Sea Drilling Project) Sites 327, 511) but they are limited with enigmatic findings. The stratigraphic evolution of the Argentine Basin during Eocene, through the present day, as demonstrated in seismic profiles, and its relationship to the global ocean conveyor belt circulation and paleo-climate at that time and forward into modern times is far from understood. While many key circulation events are interpreted from layering patterns on seismic profiles, the origin of the seismic layering and the ages of significant seismic reflections are yet to be directly determined. This is an important step in order to fully exploit the seismic signature of margin evolution. However, it is likely that sediment records obtained from this margin (from both shallow and deep water) will provide important and possibly

expanded and continuous sequences for detailed biostratigraphic and magnetostratigraphic studies during important time periods. Analysis of these records can help to illuminate questions (relevant to *Challenges 1 and 4 of IODP-SP's Climate and Ocean Change Theme*), such as:

- *When did marine sedimentation begin, how rapidly did the South Atlantic deepen, and when did northern-sourced water impact this region?*
  - *How are Cretaceous OAEs expressed in this area and does this expression change as the South Atlantic widened and deepened during the Late Cretaceous? What is the importance of circulation changes versus productivity in the formation of OAEs?*
  - *What was the nature of the deep-water mass in the South Atlantic during the Late Cretaceous "Super Greenhouse"? At what point is there evidence for a significant contribution from southern- (Antarctic) sourced deep-water?*
  - *Can depth transects of sites representing different times in the evolution of the South Atlantic circulation be found at different latitudes along the margin to determine the spatial and temporal evolution of circulation along the margin?*
  - *Can scientific drilling help to further decipher the peculiar and significant impact of the Miocene on the atmospheric evolution of our Planet? How was the Neogene shaped globally through processes taking place on or recorded in sediments of the APVCM?*
- **Sedimentology:** This sub-group considered the sediment record from a somewhat different perspective than the "Paleoceanography" topic, and questions were raised related to links between climate, sediment accumulation, atmospheric circulation and the Andean orogeny which is the most prominent tectonic feature in the Southern Hemisphere (Ghiglione et al, 2016). One particular example is that records from the continental margin will extend and complement records of wind-blown sediments recovered from Argentine loess deposits and Patagonian lakes (Heil et al., 2010; Lisé-Pronovost et al., 2015). These kinds of topics pertain to *IODP-SP's Climate and Ocean Change Theme Challenges 1 and 3*:

- *Does a signal of Andean orogeny exist in the sedimentary record of the Argentine margin? If so, what does it look like and how should it be interpreted?*
  - *Can we identify connections between paleoclimate and sedimentation patterns and rates in the region?*
  - *Did processes in this region have an impact on global sedimentation rates and patterns?*
  - *Can we identify and track material in a “source-to-sink” framework from the Andes to the Argentine margin as well as various basins?*
  - *How did Andean tectonics affect the global ocean and atmospheric circulation (wind) patterns and conditions?*
  - *Has Andean dust/loess affected primary bio-productivity during the Neogene, and might that signal also be reflected in CO<sub>2</sub> uptake/release signatures imprinted in the sediment deposits?*
  - *What can we learn about how Andean volcanism evolved and how those volcanic process and the record of uplift and erosion help us understand the subduction processes here?*
  - *What can the sediment recorded in margin sediments tell us about temporal variability of the sources of material to the margin and in the nature of along-slope and across-slope transport processes?*
- **Biosphere and Geochemistry:** This sub-group was focused on discussing the variable presence, quality and quantity of organic matter along the APVCM because reactions related to organic matter decomposition provide the energy needed by subsurface biosphere communities. In many areas microbial life and the cycling of elements is studied in steady-state environments while seismic profiles from the Argentine margin demonstrate a dynamic sedimentary environment. The APVCM is thereby considered and treated as a temporal- and spatial non-steady state depositional system, which is highly impacted by complex and dynamic sediment reworking processes (Hensen et al, 2003; Riedinger et al, 2014; Razik, 2014). Gravity-driven sediment deposition, sea level variations, strong currents and complex paleo-productivities across the short-to-long term time scales are all contributing factors to generating complex geo-chemical cycling and

biosphere activity. Buried organic-rich layers can be re-activated under certain temperature and pressure changes, thus providing food for subsurface microbial communities. Organic substrates can diffuse into adjacent, often organic-lean, sediment layers, and this new energy source can cause strong alteration of the sedimentary record long after deposition. Since little data exist for a non-steady state sediment depositional system along and across a passive margin, the APVCM represents a perfect playground to examine the diversity and activity of subsurface microbial communities and their responses to dynamic changes in their sedimentary environment. Geo-microbiological and bio-geochemical (in conjunction with detailed physical-property) studies in such deposits could be pursued with a modest addition of appropriate shipboard personnel and relates to *Challenges 5 and 7 of IODP-SP's Biosphere Frontiers Theme*:

- *How does the diversity and activity of microbial life vary with depth, geochemistry, and sediment composition and age across the APVCM?*
- *Furthermore, does microbial activity change with non-steady-state sedimentation?*
- *How do the amounts and fluxes of carbon change in time and space across the APVCM in relation to variations in primary external parameters? Are carbon and nutrients preferentially stored in sediment during times of rapid sediment accumulation and returned to the ocean during times of slow sedimentation? How does that affect the CO<sub>2</sub> input/release from the sediments?*

### **Augmenting Data and Data Management Methods**

Development of APVCM-specific drilling proposals to address the objectives cited above will require the acquisition of additional data sets. Specifically it was suggested during the workshop:

Priority #1: Obtain additional seismic data sets, including cross-lines to complement existing seismic data, for possible target sites. Such new seismic lines should be acquired using methods to resolve deeper sedimentary structures in addition to the upper sedimentary sequences. These data can be used to develop several drilling transects at different latitudes to target the collection of important Paleogene and Neogene sequences as well as to support drilling to deeper targets such as SDRs and Mesozoic sediments.

Action #1: Augment existing high-quality seismic data (e.g., Grützner et al, 2012), for example through GEOMAR's 3-D P-Cable (Planke et al, 2009; Planke and Berndt, 2002) and/or using other seismic systems, such as provided through NSF or other research grants.

Action #2: Evaluate existing sediment samples and collect new gravity and piston cores near potential drill sites to document the age, nature and character of the near-surface material to support the potential transect-oriented IODP proposals.

Priority #2: Coordinate with Pampa Azul, a strategic project of scientific research along the Argentine margin supported by the Argentine State (<http://en.mincyt.gob.ar/accion/pampa-azul-9465>). As stated on the Pampa Azul web site, the main objective of Pampa Azul is to help deepen scientific knowledge as the basis of conservation policies and management of natural resources; promote technological innovations applicable to the sustainable exploitation of natural resources and the development of industries related to the sea; strengthen the maritime awareness of Argentine society; and support with scientific information and presence the country's sovereignty in the South Atlantic area. The Pampa Azul initiative was a one of the workshop sponsors and several of the attendees were associated with Pampa Azul. We encourage linkages between any scientific drilling campaign on the APVCM and Pampa Azul investigators. Argentina provides an excellent example for developing a vibrant, highly ambitious ocean research program (Pampa Azul). Coordinating with Pampa Azul through this IODP-sponsored workshop provided an important mechanism to begin important collaborations between the Argentine ocean research community and IODP investigators.

Priority #3: Encourage the development of Continent-Ocean transect drilling proposals for joint evaluation by IODP and ICDP. Important and complementary records come from both continental and marine settings, and a full understanding of margin evolution and requires working in both settings.

## **Outcomes of the Workshop**

The main outcome of this workshop is the formation of several working groups addressing the various scientific topics briefly outlined in this report, and committed to preparing several pre/full-proposals to IODP that are appropriate for the R/V JOIDES Resolution. As of January, 2017 two preliminary proposals are active in the IODP system and full proposals for these proposals have been invited. See <https://www.iodp.org/proposals/active-proposals> for full details. 903-Pre "Argentine Margin Seaward Dipping Reflectors" considers the early opening of the South Atlantic and especially the sampling of the SDRs that formed in a non-hotspot setting and the overlying Cretaceous and Cenozoic sediments. Secondary objectives include the evolution of atmospheric circulation and the diversity and activity of microbial life under non-steady state conditions. 911-Pre "Argentine Margin Paleooceanographic Transects" develops a "transect" approach to better understand the evolution of Southern Ocean water structure over a broad vertical and temporal range. Secondary objectives include how the passive margin architecture responds to Cenozoic climate and tectonics and the microbial variability through time under different climate, deep-water circulation and sediment flux regimes. Developing these and other pre/full proposals for the time window when the R/V JOIDES Resolution is likely to operate in the South Atlantic will probably require the collection of additional data and coordination amongst the international partners.

### **Relationship to IODP Initial Science Plan and Beyond**

The scientific objectives for potential IODP drilling proposals are central aspects of the International Ocean Discovery Program as formulated in the science plan for 2013-2023 "Illuminating Earth's Past, Present, and Future". Knowledge acquired as a result of this drilling project will significantly advance the IODP Theme "Climate and ocean change: reading the past, informing the future", specifically Challenges 1 "How does Earth's climate system respond to elevated levels of atmospheric CO<sub>2</sub>?", 3 "What controls regional patterns of precipitation, such as those associated with monsoons or El Niño?" and 4 "How resilient is the ocean to chemical perturbations?", as well as the "Earth Connections: deep processes and their impact on Earth's surface environment" theme, specifically Challenges 8 "What are the composition, structure, and dynamics of Earth's upper mantle?", 9 "How are seafloor spreading and mantle melting linked to ocean crustal architecture?", and 10 "What are the mechanisms, magnitude, and history of

chemical exchanges between the oceanic crust and seawater?” Throughout the workshop we have been learning how to integrate objectives related to biosphere frontiers with those of other themes. This has been very successful and drilling resulting from this workshop will significantly advance the IODP theme "biosphere frontiers: deep life, biodiversity, and environmental forcing of ecosystems", specifically Challenges 5 “What are the origin, composition, and global significance of seafloor communities” and 7 “How sensitive are ecosystems and biodiversity to environmental change?”

### **Societal Relevance and Responsibility**

The interconnection of this IODP project with Pampa Azul and corresponding initiatives (for example with the German DFG-BMBF) provides opportunities for early-career scientists among the various countries. ICDP (International Continental Scientific Drilling Program) at the German Research Centre for Geosciences (GFZ) in Potsdam actively fosters and sponsors such efforts and incentives via financial and logistical support. We also encourage syndicated, perhaps educational television, documentaries about scientific drilling on the Argentine margin as projects develop. This type of activity can help to inform the general public whose tax dollars these studies, and raise favorable awareness for these types of international collaborations at a time of significant geo-political and economic challenges. This is just one aspect of interacting with the public at all levels in order to generate a deeper understanding and appreciation for the importance of scientific drilling both on land and the ocean.

### **Acknowledgments**

We thank NSF-USSSP, ECORD, COPLA, Ministry of Foreign Office, Ministry of Science (MINCYT), Pampa Azul, YPF, Y-Tec, IGeBA, CIG-CONICET-UNLP, the German IODP Koordinationsbüro, the Pontifical Catholic University of Rio Grande do Sul, Brazil and ANCAP for generously providing logistical and financial support for the APVCM Workshop and event attendees. COPLA Coordinator Dr Frida Armas Pfirter and Minister Osvaldo Mársico deserve special thanks for their hospitality and for doing a superb job hosting this event (which received rave reviews from the attendees) in concert with a competent technical service team at the venue.



Supporting Institutions in Argentina were the Argentina Hydrographic Survey and the Instituto de Geologia de Costas y del Cuaternario-University of Mar del Plata. Research was conducted in the framework of the “Drifters” Research Group of the Royal Holloway University of London. We appreciate the constructive feedback from various reviewers of the original workshop proposal, in particular Dr. Ann Holbourn (Kiel University), and also the reviewers of this workshop report. We especially acknowledge Manika Prasad, Christian Berndt and, in particular, Denise Kulhanek (IODP-JRSO-TAMU) and Jim Wright (Rutgers) who led efforts to submit the first two APVCM pre-proposals (903-Pre and 911-Pre). Most importantly, thanks go to all workshop attendees and participating scientists for their enthusiastic and ongoing contributions before, during and after the event, thereby helping to develop pre-proposals as concrete outcomes from this workshop. All investigators, workshop attendees and updates can be found on the ICDP project website at <http://apvcm.icdp-online.org>. Additional details can also be found at <http://usoceandiscovery.org/workshops/>. Contribution Number 1434 of the School of Marine and Atmospheric Sciences, Stony Brook University.

#### Author Affiliations.

Note: Report authors consist of the Workshop Steering Committee

Roger D. Flood<sup>1</sup>

School of Marine and Atmospheric Sciences, Stony Brook University, Stony Brook, New York 11794-5000, USA; [roger.flood@stonybrook.edu](mailto:roger.flood@stonybrook.edu), contact author

Roberto A. Violante<sup>2</sup>

Argentina Hydrographic Survey, Buenos Aires, C1270ABV, Argentina;  
[rober.a.violante@gmail.com](mailto:rober.a.violante@gmail.com)

Thomas Gorgas<sup>3</sup>

GFZ German Research Centre for Geosciences, 14473 Potsdam, Germany; [tgorgas@gfz-potsdam.de](mailto:tgorgas@gfz-potsdam.de)

Ernesto Schwarz<sup>4</sup>

Geological Research Center, Univ. of La Plata - CONICET, B1904DPK, Argentina;  
[eschwarz@cig.museo.unlp.edu.ar](mailto:eschwarz@cig.museo.unlp.edu.ar)

Jens Grützner<sup>5</sup>

Alfred-Wegener-Institut Helmholtz-Zentrum für Polar- und Meeresforschung, 27568  
Bremerhaven, Germany; jens.gruetzner@awi.de

Gabriele Uenzelmann-Neben<sup>5</sup>

Alfred-Wegener-Institut Helmholtz-Zentrum für Polar- und Meeresforschung, 27568  
Bremerhaven, Germany; gabriele.uenzelmann-neben@awi.de

F. Javier Hernández-Molina<sup>6</sup>

Department of Earth Sciences, Royal Holloway, University of London, Egham, Surrey,  
TW20 0EX, United Kingdom; javier.hernandez-molina@rhul.ac.uk

Jennifer Biddle<sup>7</sup>

School of Marine Science and Policy, University of Delaware, Lewes, Delaware 19958,  
USA; jfbiddle@udel.edu

Guillaume St-Onge<sup>8</sup>

Institut des Sciences de la Mer de Rimouski, Université du Québec à Rimouski, Rimouski,  
Quebec G5L A1, Canada; guillaume\_st-onge@uqar.ca

APVCM Workshop Participants -- See attached list for all participants

**Note: Workshop Report has been published in *Scientific Drilling*, 22, 49-61, 2017 ([www.sci-dril.net/22/49/2017/](http://www.sci-dril.net/22/49/2017/)).**

**Flood, R.D, Violante, R.A., Gorgas, T., Schwarz, E., Grütznert, J., Uenzelmann-Neben, G., Hernández-Molina, F.J., Biddle, J. St-Onge, G., and APVCM workshop participants. IODP Workshop: Developing Scientific Drilling Proposals for the Argentina Passive Volcanic Continental Margin (APVCM) - Basin Evolution, Deep Biosphere, Hydrates, Sediment Dynamics and Ocean Evolution. *Sci. Dril.*, 22, 49–61, 2017, doi:10.5194/sd-22-49-2017.**

## References

- Armstrong McKay, D.I., Tyrrell, T., Wilson, P.A. and Foster, G.L., 2014. Estimating the impact of the cryptic degassing of Large Igneous Provinces: A mid-Miocene case-study. *Earth and Sciences Letters*, 403:254-262, doi:10.1016/j.epsl.2014.06.040.
- Bender, V.B., Hanebuth, T.J.J., Chiessi, C.M., 2013. Holocene shifts of the Subtropical Shelf Front off southeastern South America controlled by high and low latitude atmospheric forcings. *Paleoceanography* 28:481-490, doi:10.1002/palo.20044.
- Bozzano, G., Violante, R.A. and Cerredo, M.E., 2011. Middle slope contourite deposits and associated sedimentary facies off NE Argentina. *Geo-Marine Letters*, 31: 495-507. doi:10.1007/s00367-011-0239-x.
- Broecker, W., 1991. The great ocean conveyor. *Oceanography*, 4(2): 79-89, doi:10.5670/oceanog.1991.07.
- Chiessi, C.M., Ulrich, S., Mulitza, S., Pätzold, J. and Wefer, G., 2007. Signature of the Brazil-Malvinas Confluence (Argentine Basin) in the isotopic composition of planktonic foraminifera from surface sediments. *Marine Micropaleontology*, 64:52-66, doi:10.1016/j.marmicro.2007.02.002.
- Ewing, M. and Lonardi, A.G.: Sediment transport and deposition in the Argentine Basin. 5. Sedimentary structures of the Argentine margin, basin and related provinces. *Phys. Chem. Earth*, 8, 125-156, 10.1016/0079-1946(71)90017-6, 1971, doi:10.1016/j.marmicro.2007.02.002.
- Foster, G.L., Lear, C.H., and Rae, J.W.B., 2012. The evolution of pCO<sub>2</sub>, ice volume and climate during the middle Miocene. *Earth and Planetary Science Letters*, 341-344:243-254, doi:10.1016/j.epsl.2012.06.007. doi:10.1130/G32701.1.
- Friedrich, O., Norris, R.D. and Erbacher, J., 2012. Evolution of middle to Late Cretaceous oceans--A 55 m.y. record of Earth's temperature and carbon cycle. *Geology*, 40; 107-110, .
- García Chaporí N, Laprida C, Watanabe S, Totah V, Violante RA (2014). Mid-Late Pleistocene benthic foraminifera from Southwestern South Atlantic: driven by primary productivity or watermass properties? *Micropaleontology* 60 (2): 195–210.

- García Chaporí N, Chiessi CM, Bickert T, Laprida C (2015). Sea-surface temperature reconstruction of the Quaternary western South Atlantic: New planktonic foraminiferal correlation function, *Palaeogeography, Palaeoclimatology, Palaeoecology* 425: 67–75, doi:10.1016/j.palaeo.2015.02.027.
- Ghiglione, M.C., Christian Sue, Miguel Ramos, Johnathan E. Tobal and Rocio E. Gallardo, 2016. The Relation Between Neogene Denudation of the Southernmost Andes and Sedimentation in the Offshore Argentine and Malvinas Basins During the Opening of the Drake Passage. *Chapter 5* in: *Geodynamic Evolution of the Southernmost Andes* (Editor: Matias C. Ghiglione). 206 pages. ISBN 978-3-319-39727-6.
- Gladchenko, T.P., Hinz, K., Eldholm, O., Meyer, H. Neben, S. and Skogseid, J., 1997. South Atlantic volcanic margins. *J. Geol Soc., London*, 154: 465-470, doi:10.1144/gsjgs.154.3.0465.
- Govin, A., Holzwarth, U., Heslop, D., Ford Keeling, L., Zabel, M., Mulitza, S., Collins, J.A., and Chiessi, C.M., 2012. Distribution of major elements in Atlantic surface sediments (36N<sup>o</sup>-49<sup>o</sup>S): Imprints of terrigenous input and continental weathering. *Geochem. Geophys. Geosyst.*, 13. Q01013, doi: 10.1029/2011GC003785.
- Granot, R. and Dymant, J., 2015. Cretaceous opening of the South Atlantic Ocean, *EPSL*, 414; 156-163, doi:10.1016/j.epsl.2015.01.015.
- Grützner, J., Uenzelmann-Neben, G., and Franke, D. (2011). Variations in bottom water activity at the southern Argentine margin: indications from a seismic analysis of a continental slope terrace. *Geo-Mar.Lett.*, 31(5), 405-417, doi:10.1007/s00367-011-0252-0.
- Grützner, J., Uenzelmann-Neben, G., and Franke, D. (2012). Variations in sediment transport at the central Argentine continental margin during the Cenozoic. *Geochem. Geophys. Geosyst.*, 13, Q10003, doi:10.1029/2012GC004266.
- Grützner, J., Uenzelmann-Neben, G. and Franke, D., 2016. Evolution of the northern Argentine margin during the Cenozoic controlled by bottom current dynamics and gravitational processes. *Geochemistry, Geophysics, Geosystems*, 17: 3131-3149. doi: 10.1002/2015GC006232
- Hamon, N., Sepulchre, P., Lefebvre, V. and Ramstein, G., 2013. The role of eastern Tethys seaway closure in the Middle Miocene Climatic Transition (ca. 14 Ma). *Climate of the Past*, 9:2687-2702, doi:10.1029/2012GC004266.

- Hanna, G.D., Hendey, I.N., Brigger, A.L., 1976. Some Eocene diatoms from South Atlantic cores, Part I. California Academy of Sciences, Occ. Papers, 123, p. 1-19.
- Heil, C.W.Jr., King, J.W., Zarate, M., and Schultz, P.H., 2010. Climatic interpretation of 1.9 Ma environmental magnetic record of loess deposition and soil formation in the central eastern Pampas of Buenos Aires, Argentina. *Quaternary Science Reviews* 29, 2705-2718, doi:10.1016/j.quascirev.2010.06.024.
- Heine C., Zoethout, J. and Muller, R.D., Kinematics of the South Atlantic Rift. *Solid Earth*, 4; 215-253, doi:10.5194/se-4-215-2013.
- Hensen C., Zabel M., Pfeifer K., Schwenk T., Kasten S., Riedinger N., Schulz H. D., and Boetius A. (2003) Control of sulfate pore-water profiles by sedimentary events and the significance of anaerobic oxidation of methane for burial of sulfur in marine sediments. *Geochim. Cosmochim. Acta* 67, 2631–2647, doi:10.1016/S0016-7037(03)00199-6.
- Hernández-Molina, F.J., M.Paterlini, R., Violante, P., Marshall, M. de Isasi, L.Somoza, and M.Rebesco (2009). Contourite depositional system on the Argentine Slope: An exceptional record of the influence of Antarctic water masses. *Geology*, 37(6), 507-510, doi:10.1130/G25578A.1.
- Hernández-Molina, F.J., M.Paterlini, L.Somoza, R. Violante, M.A.Arecco, M. de Isasi, M.Rebesco, G. Uenzelmann-Neben, S.Neben, and P.Marshall (2010). Giant mounded drifts in the Argentine Continental Margin: Origins and global implications for the history of thermohaline circulation. *Mar. Petrol.Geol.*, 27(7), 1508-1530. doi:10.1016/j.marpetgeo.2010.04.003
- Hernández-Molina, F.J., M.Soto, A.R.Piola, J.Tomasini, B.Preu, P.Thompson, G.Badalini, A.Creaser, R. Violante, E.Morales, H.de Santa Ana (2015). A contourite depositional system along the Uruguyan continental margin: Sedimentary, oceanographic and paleocenographic implications. *Mar. Geol.*, 378, 333-349, doi:10.1016/j.margeo.2015.10.008.
- Hinz, K., Neben, S., Schreckenberger, B., Roeser, H.A., Block, M., Gonçalves de Souza, K., and Meyer, H., 1999. The Argentine continental margin north of 48° S: Sedimentary successions, volcanic activity during breakup. *Marine and Petroleum Geology*, v. 16, p. 1–25, doi:10.1016/S0264-8172(98)00060-9.

- Katz, M.E., Cramer, B.S., Toggweiler, J.R., Esmay, G. Liu, C., Miller, K.G., Rosenthal, Y., Wade, B.S., and Wright, J.D., 2011, Impact of Antarctic Circumpolar Current development on Late Paleogene ocean structure: *Science*, v. 332, p. 1076-1079, doi:10.1126/science.1202122.
- Krastel, S., Wefer, G., Hanebuth, T.J.J., Antobreh, A.A., Freudenthal, T., Preu, B., Schwenk, T., Strasser, M., Violante, R., and Winkelmann, D., 2011. Sediment dynamics and geohazards off Uruguay and the de la Plata region (northern Argentina and Uruguay). *Geo-Marine Letters*, 31: 271-283, doi:10.1007/s00367-011-0232-4.
- Lastras, G., Acosta, J., Munoz, A. and Canals, M., 2011. Submarine canyon formation and evolution in the Argentine Continental Margin between 44°30'S and 48°S. *Geomorphology*, 128: 116-136, doi:10.1016/j.geomorph.2010.
- Lisé-Pronovost, A., St-Onge, G., Gogorza, C., Habertzettl, T., Jouve, G., Francus, P., Ohlendorf, C., Gebhardt, C., Zolitschka, B. and PASADO Science Team., 2015. Rock-magnetic proxies of wind intensity and dust since 51,200 cal BP from lacustrine sediments of Laguna Potrok Aike, southeastern Patagonia. *EPSL*, 411: 72-86, doi:10.1016/j.geomorph.2010.
- Loefering, M.J., Anka, Z., Autin, J., di Primio, R., Marchal, D., Rodriguez, J.F., Franke, D. and Vallejo, E., 2013. Tectonic evolution of the Colorado Basin, offshore Argentina, inferred from seismo-stratigraphy and depositional rates analysis. *Tectonophysics*, 604:245-263, doi:10.1016/j.tecto.2013.02.008.
- Lonardi, A.G. and Ewing, M. 1971. Sediment transport and distribution in the Argentine Basin. 4. Bathymetry of the continental margin, Argentine Basin and other related provinces. Canyons and sources of sediments. *Phys Chem Earth*, 8:79–121, doi:10.1016/0079-1946(71)90016-4.
- Martinod, J., Husson, L., Roperch, P., Guillaume, B., and Espurt, N., 2010. Horizontal subduction zones, convergence velocity and the building of the Andes. *Earth and Planetary Science Letters*, 299: 299-309, doi:10.1016/j.epsl.2010.09.010.
- Moulin, M., Aslanian, D. and Unternehr, P., 2010. A new starting point for the South and Equatorial Atlantic Ocean. *Earth-Science Reviews*, 98: 1-37, doi:10.1016/j.earscirev.2009.08.001.
- Munoz, A., Cristobo, J., Rios, P., Druet, M., Polonio, V. Uchipi, E., Acosta, J. and Atlantis Group, 2012. Sediment drifts and cold-water coral reefs in the Patagonian upper and middle

- continental slope. *Marine and Petroleum Geology*, 36: 70-82,  
doi:10.1016/j.marpetgeo.2012.05.008.
- Pardo-Casas, F., Molnar, P., 1987. Relative motion of the Nazca (Farallon) and South-American plates since late Cretaceous time. *Tectonics* 6, 233–248,  
doi:10.1029/TC006i003p00233.
- Planke, S. and Berndt, C.: "Anordning for seismikkmåling", Patent 20021140, 2002.
- Planke, S., F. N. Erikson, C. Berndt, J. Mienert, and D. Masson (2009), P-Cable High-Resolution Seismic, *Oceanography*, 22(1), 85–85, doi:10.5670/oceanog.2009.09.
- Preu, B., Hernández-Molina, F.J., Violante, R., Piola, A.R., Paterlini, C.M., Schwenk, T., Voigt, I., Krastel, S. and Spiess, V., 2013. Morphosedimentary and hydrographic features of the northern Argentine margin: the interplay between erosive, depositional and gravitational processes and its conceptual implications. *Deep-Sea Research I*, 75: 157-174,  
doi:10.1016/j.margeo.2012.09.009.
- Preu, B., Schwenk, T., Hernández-Molina, F.J., Violante, R., Paterlini, M., Krastel, S., Tomasini, J., Spiess, V., 2012. Sedimentary growth pattern on the northern Argentine slope: the impact of North Atlantic Deep Water on southern hemisphere slope architecture. *Mar. Geol.* 329–331: 113–125, doi:10.1016/j.dsr.2012.12.013.
- Razik, S., 2014. How magnetics and granulometry of continental margin sediments reflect terrestrial and marine environment of South America and West Africa. Dissertation for the doctoral degree in natural sciences (Dr. rer. nat.) at the Faculty of Geosciences of the Bremen University. 147 pages.
- Razik, S., Chiessi C.M., Romero, O.E., von Dobeneck, T., 2013. Interaction of the South American Monsoon System and the Southern Westerly Wind Belt during the last 14 kyr, *Palaeogeography, Palaeoclimatology, Palaeoecology* 374:28–40,  
doi.org/10.1016/j.palaeo.2012.12.022, doi:10.1016/j.palaeo.2012.12.022.
- Riedinger, N., Formolo, M.J., Lyons, T.W., Henkel, S., Beck, A. and Kasten, S., 2014. An inorganic geochemical argument for coupled anaerobic oxidation of methane and iron reduction in marine sediments. *Geobiology*, 12: 172-181, doi:10.1111/gbi.12077.
- Ross, R., 1976. Some Eocene diatoms from South Atlantic cores, Part II., *California Academy of Sciences, Occ. Papers*, 123, p. 21-27.

- Ryan, W.B.F., S.M. Carbotte, J.O. Coplan, S. O'Hara, A. Melkonian, R. Arko, R.A. Weissel, V. Ferrini, A. Goodwillie, F. Nitsche, J. Bonczkowski, and R. Zemsky, 2009, Global Multi-Resolution Topography synthesis, *Geochem. Geophys. Geosyst.*, 10, Q03014, doi:10.1029/2008GC002332.
- Shevenell, A.E., Middle Miocene Southern Ocean cooling and Antarctic cryosphere expansion. *Science*, 305:1766-1770, doi:10.1126/science.1100061.
- Torsvik, T.H., Rouse, S., Labails, C and Smethurst, M.A., 2009. A new scheme for opening of the South Atlantic Ocean and the dissection of an Aptian salt basin. *Geophys. J. Int.*, 177: 1315-1333, doi:10.1111/j.1365-246X.2009.04137.x.
- Uenzelmann-Neben, G., Weber, T., Grützner, J. and Thomas, M., 2016 (in press). Transition from the Cretaceous ocean to Cenozoic circulation in the western South Atlantic — A twofold reconstruction. *Tectonophysics*, in press.  
<http://dx.doi.org/10.1016/j.tecto.2016.05.036>
- Violante, R.A., Paterlini, C.M., Costa, I.P., Hernández-Molina, F.J., Segovia, L.M., Cavallotto, J.L., Marcolini, S., Bozzano, G., Laprida, C., Garcia-Chapori, N., Bickert, T., Spiess, V. (2010). Sismostratigrafía y Evolución Geomorfológica del Talud Continental Adyacente al Litoral del Este Bonaerense, Argentina. *Latin American Journal of Sedimentology and Basin Analysis*. Vol. 17(1), 33-62, <http://ref.scielo.org/qnx2ts>.
- Voigt, I., Henrich, R., Preu, B.M., Piola, A.R., Hanebuth, T.J.J., Schwenk, T. and Chiessi, C.M., 2013. A submarine canyon as a climate archive -- interaction of the Antarctic Intermediate Water with the Mar del Plata Canyon (Southwest Atlantic). *Marine Geology*, 341: 46-57, <http://ref.scielo.org/qnx2ts>.





## IODP Workshop: Developing Scientific Drilling Proposals for the Argentina Passive Volcanic Continental Margin (APVCM) -

*Basin Evolution, Deep Biosphere, Hydrates, Sediment Dynamics and Ocean Evolution*

**Buenos Aires, 8–11 September 2015**

### Workshop Participants

<b>Name</b>	<b>Institution</b>	<b>E-mail</b>
Ariztegui, Daniel	University of Geneva, Switzerland	daniel.ariztegui@unige.ch
Beilinson, Elisa	CIG – UNLP, Argentina	beilinson@cig.museo.unlp.edu.ar
Berndt, Christian	Christian-Albrechts-University, Germany	cberndt@geomar.de
Bolatti, Nestor	YPF – Offshore, Argentina	nestor.bolatti@ypf.com
Bozzano, Graziella	Servicio de Hidrografía Naval, Argentina	grazi.hidro.gov.ar@gmail.com
Briggs Brandon	University of Alaska - Anchorage USA	bbriggs@uaa.alaska.edu
Cuitiño, José	CENPAT - CONICET, Argentina	jcuitino@cenpat-conicet.gob.ar
Dickens, Gerald	Rice University, USA	jerry@rice.edu
Esteban, Federico	IGeBA – UBA, Argentina	federico.esteban@gmail.com
Flood, Roger	Stony Brook University, USA	roger.flood@stonybrook.edu
García Chapori, Natalia	SACMa – IDEAN - UBA, Argentina	nataliag@gl.fcen.uba.ar
Gerster, Ricardo	YPF - Offshore, Argentina	ricardo.gerster@ypf.com
Ghidella, Marta	Instituto Antártico Argentino, Argentina	mghidella@gmail.com
Gomez, Fernando	CICTERRA Córdoba, CONICET, Argentina	fernandogomez411@gmail.com
Gorgas, Thomas	GFZ, Potsdam, Germany	tgorgas@gfz-potsdam.de
Gruetzner, Jens	Alfred-Wegener-Institut, Germany	jens.gruetzner@awi.de
Heil, Chip	University of Rhode Island, USA	chiph@uri.edu
Hernandez-Molina, F. Javier	Royal Holloway University, London, United Kingdom	javier.hernandez-molina@rhul.ac.uk
Iglesia Llanos, Paula	IGeBA - UBA, Argentina	mpiglesia@gl.fcen.uba.ar
Isola, José	IGeBA – UBA, Argentina	jose.isola91@gmail.com
Jimenez, Mariano	Urien & Assoc., Argentina	mariano_registrado@hotmail.com
Kress, Pedro R.	YPF - Offshore, Argentina	pkress@ypf.com
Kulhanek, Denise	IODP-JRSO-TAMU JRSO, USA	kulhanek@iodp.tamu.edu
Leon Zayas, Rosa	University of Delaware, USA	rleonzay@udel.edu
Malumian, Norberto	CONICET, Argentina	n.malumian@yahoo.com
Medina Ketze, Joao Marcelor	Instituto do Petróleo e Recursos Naturais, PUCRS Brazil	jketzer@puers.br
Orgeira, Maria Julia	CONICET - UBA, Argentina	orgeira@gl.fcen.uba.ar
Paterlini, C. Marcelo	COPLA – Servicio de Hidrografía Naval, Argentina	cmpaterlini@yahoo.com.ar
Perez Panera, Juan P.	Y-Tec, Argentina	perezpanera@gmail.com
Ramos, Victor	UBA - CONICET, Argentina	andes@gl.fcen.uba.ar
Rapalini, Augusto	IGeBA – UBA - CONICET, Argentina	rapalini@gl.fcen.uba.ar
Reuber, Kyle	University of Houston & ION - GeoVentures USA	kyle.reuber@iongeo.com
Riedinger, Natascha	Oklahoma State University, USA	natascha.riedinger@okstate.edu
Schwarz, Ernesto	CIG - UNLP - CONICET, Argentina	eschwarz@cig.museo.unlp.edu.ar
Selva, Carlos	Y-Tec, Argentina	carlos.selva@ypf.com
Slowey, Niall	Dept of Oceanography, TAMU, USA	slowey@geos.tamu.edu
Soto, Matías	ANCAP Uruguay	msoto@fcien.edu.uy
St-Onge, Guillaume	Université du Québec à Rimouski, Canada	guillaume_st-onge@uqar.ca
Tassone, Alejandro	IGeBA – UBA – CONICET. Pampa Azul, Argentina	atassone@gl.fcen.uba.ar
Troisi, Ariel	Servicio de Hidrografía Naval, Argentina	atroisi@hidro.gov.ar
Uenzelmann-Neben, Gabriele	Alfred-Wegener-Institut, Germany	gabriele.uenzelmann-neben@awi.de
Urien, Carlos Maria	Urien & Assoc., Argentina	uriencm@fibertel.com.ar
Violante, Roberto A.	Servicio de Hidrografía Naval. Pampa Azul, Argentina	rober.a.violante@gmail.com
Wehrmann, Laura	Stony Brook University, USA	laura.wehrmann@stonybrook.edu
Wright, Jim	Rutgers University, USA	jdwright@rci.rutgers.edu

TUESDAY, September 8	WEDNESDAY, September 9	THURSDAY, September 10
Registration		
<p>9.30 – 10.00 Welcome. Official opening session.</p> <p>Workshop introduction. Organizational details. Meeting objectives Workshop background. R. FLOOD: IODP overview T. GORGAS: IDCP overview</p>	<p>9.30 Presentation of proposed drilling locations. Argentine group: R.A. VIOLANTE, G. BOZZANO, R. GERSTER, C.M. PATERLINI. Other proposals.</p>	<p>9.30 Working groups (thematic): tectonic, margin evolution, sedimentology, seismic-data, climate change, paleoceanography, others?</p>
11.00 – 11.30 Coffee break	11.00 – 11.30 Coffee break	11.00 – 11.30 Coffee break
<p>J. HERNANDEZ MOLINA: (videoconference). The Argentine and Uruguayan margins in the global context: reasons for an IODP proposal. J. GRUETZNER: Changes in sediment deposition along the Argentine margin during the Cenozoic as seen in multichannel seismic reflection data. D. KULHANEK: Scientific Ocean Drilling and the JOIDES Resolution.</p>	<p>G. UENZELMANN-NEBEN: The Importance of Seismic Data for IODP Sites. C. BERNDT: Recent advances in high-resolution, 3D seismic data acquisition and analysis. K. REUBER: ION - Geoventures Seismic Data from the Argentine Margin.</p>	<p>Working groups (thematic): tectonic, margin evolution, sedimentology, seismic-data, climate change, paleoceanography, others?</p>
13.00 – 14.00 Lunch	13.00 – 14.00 Lunch	13.00 – 14.00 Lunch
<p>M. GHIDELLA, C.M. PATERLINI &amp; D. ABRAHAM: The opening of the South Atlantic: a review. C.M. URIEN: Argentine Margin: A Fast Review of the Extensional Tectonic and Stratigraphy. J. WRIGHT: Million-year scale Deep-Water Circulation Changes: Why the Argentinian Basin Record is important.</p>	<p>Presentations and discussions on available seismic data, industry wells and other geological information necessary for supporting drilling proposals.</p>	<p>The dissection of an IODP proposal -- the case of Exp. 339. Working Group updates. Building towards a plan (or two).</p>
15.30 – 16.00 Coffee break	15.30 – 16.00 Coffee break	15.30 – 16.00 Coffee break
<p>N. GARCIA CHAPORI: Tracking paleoceanographic changes in the Argentine Continental Margin. R. LEON ZAYAS: Deep subsurface microbiology: what we do and don't know.</p>	<p>Working groups (thematic): tectonic, margin evolution, sedimentology, seismic-data, climate change, paleoceanography, others?</p>	<p>Draft reports of working groups. Closure session</p>
17.30 Reception. Ice breaker		

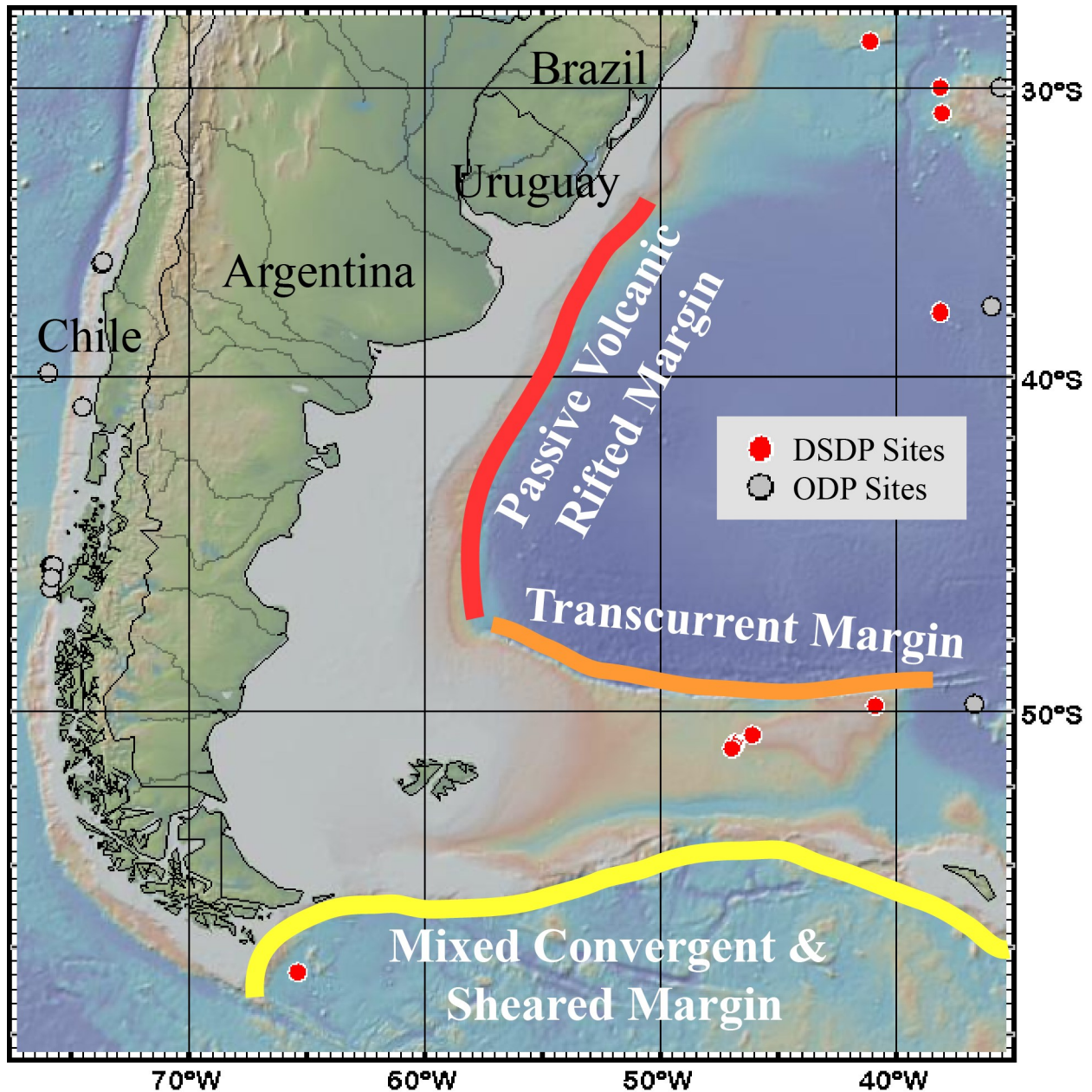


Figure 1. The character of the Argentine continental margin. Red: Passive volcanic rifted margin. Orange: Transcurrent margin. Yellow: Mixed convergen and sheared margin. The passive volcanic rifted margin is termed the APVCM. Red dots indicate DSDP (Deep Sea Drilling Project) Sites, gray dots indicate ODP (Ocean Drilling Project) Sites. Figure constructed in GeoMapApp (<http://www.geomapp.org>) using the Global Multi-Resolution Topography (GMRT) Synthesis (Ryan et al., 2009).



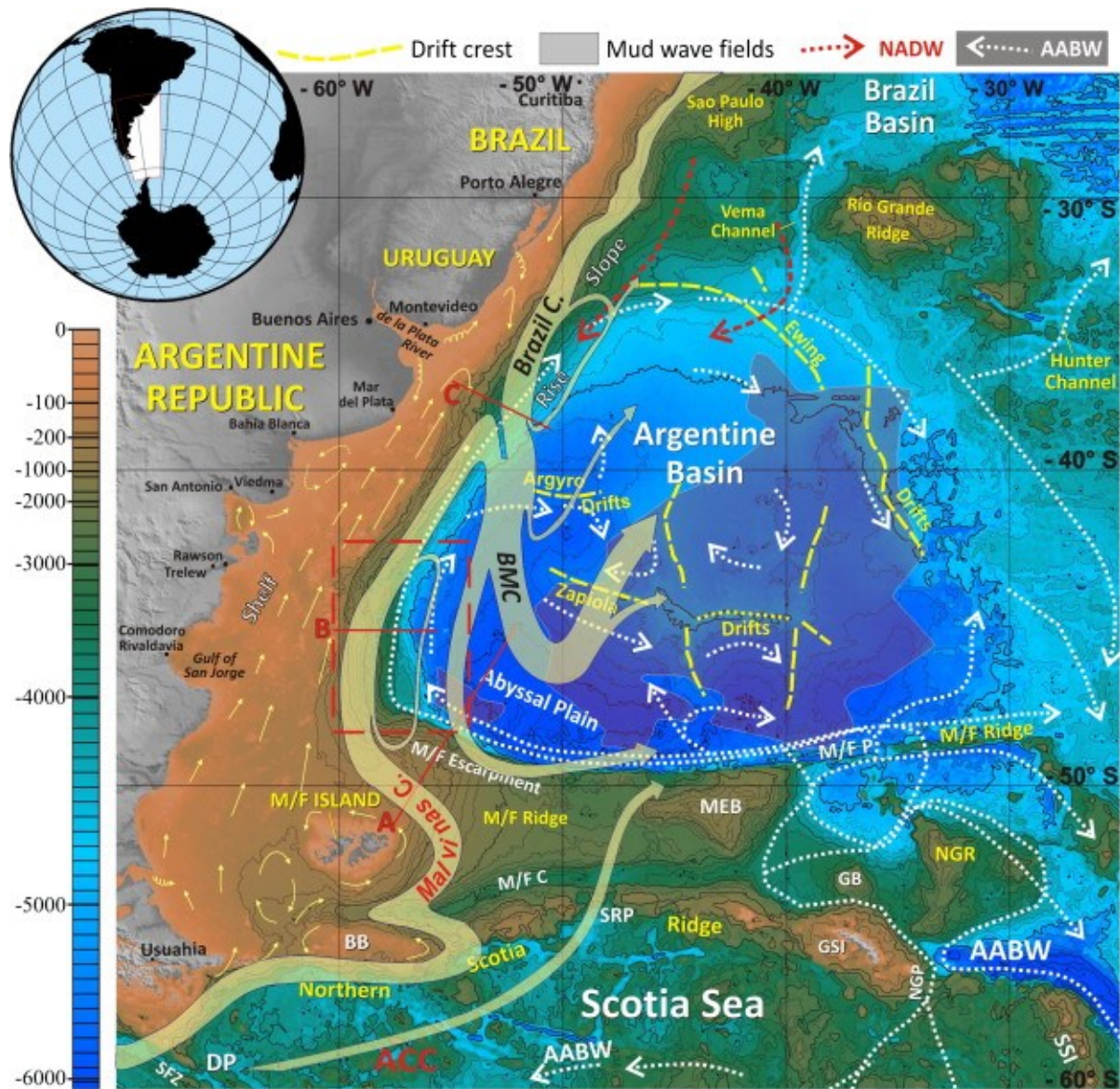


Figure 2. Location of Argentine Basin with regional bathymetric map and general circulation of surface and deep-water masses indicated (after Hernández-Molina et al, 2010). Legend for the physiographic reference points, in alphabetical order: BB. Burdwood Bank; BMC. Brazil-Malvinas Confluence; DP. Drake Passage; M/FI. Malvinas-Falkland Island; M/FE. Malvinas-Falkland Escarpment; M/FP. Malvinas-Falkland Passage; M/FR. Malvinas-Falkland Ridge; GB. Georgia Basin; GP. Georgia Passage; MEB. Maurice Ewing Bank; NGP. Northeast Georgia Passage; NGR. Northeast Georgia Ridge; SG. South Georgia; SFZ. Shackleton Fracture Zone; SRP. Shag Rocks Passage; and SSI. South Sandwich Island. Legend for the water masses: ACC. Antarctic Circumpolar Current; AABW Antarctic Bottom Water.

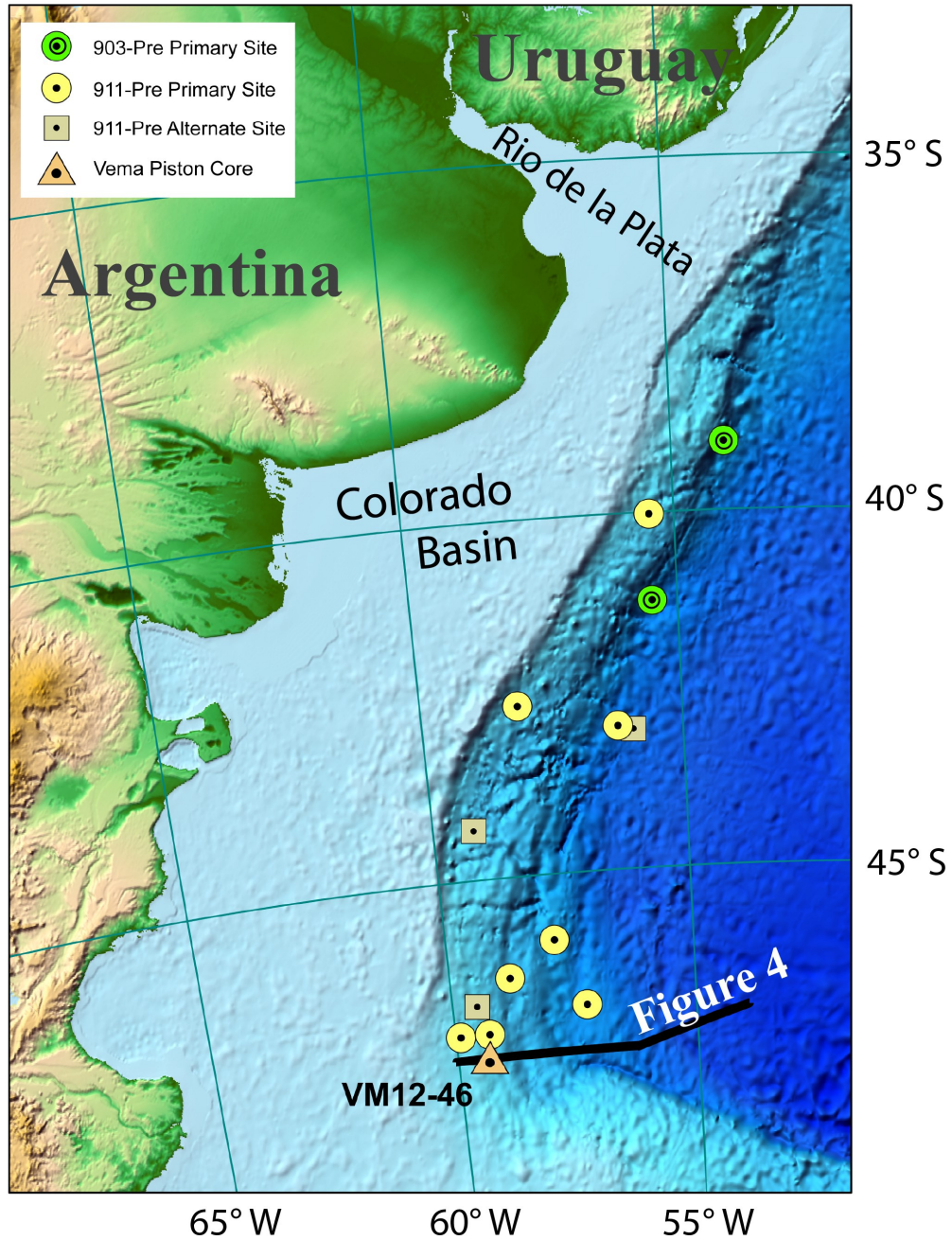


Figure 3. Location of sites proposed by IODP Proposals 903-Pre "Argentine Margin Seaward Dipping Reflectors" and 911-Pre "Argentine Margin Paleoceanographic Transects". Also shown are the location of core VM12-46 and the location of the seismic profile in Figure 4. Figure constructed in ArcMap using the ETOPO1 basemap (doi:10.7289/V5C8276M).



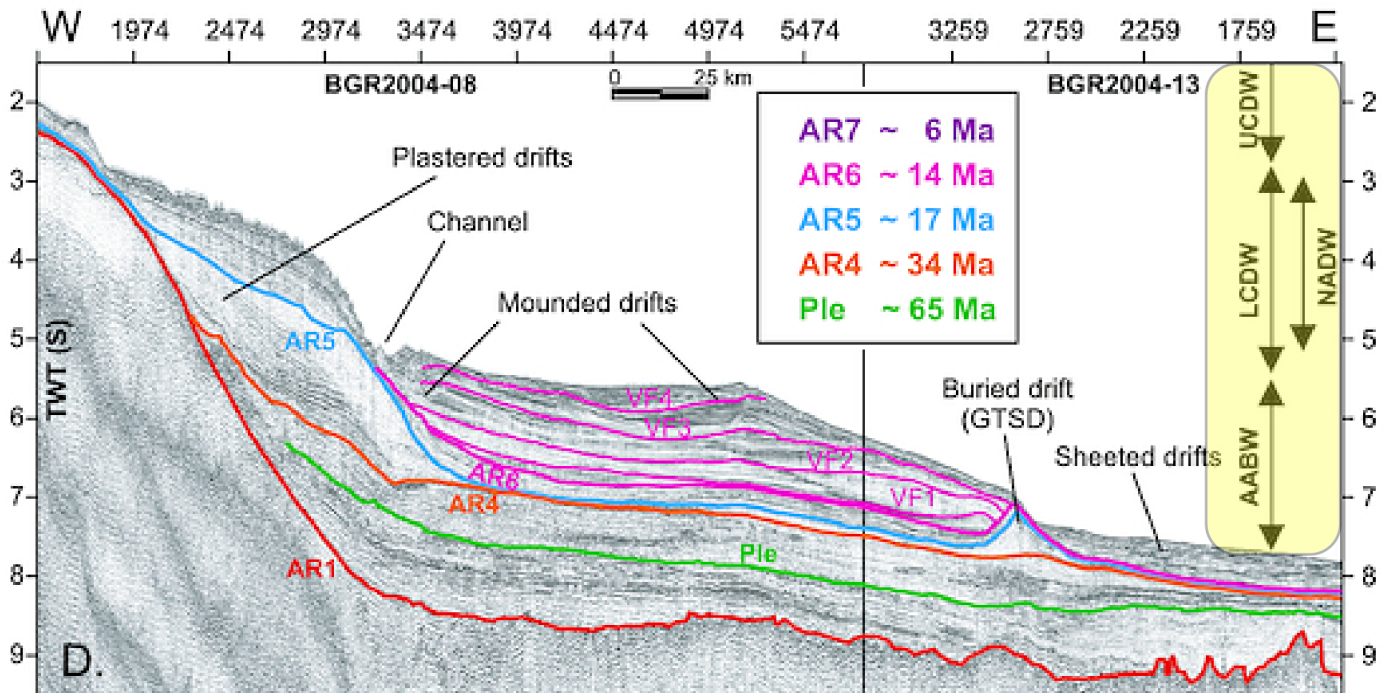


Figure 4. Interpreted seismic line across the Argentine Margin featuring distinct drift deposits, channels, and thickness of deposits. Ocean current distribution within the water column: AABW=Antarctic Bottom Water; LCDW=Lower Circumpolar Deep Water; UCDW=Upper Circumpolar Deep Water; NADW=North Atlantic Deep Water (after Grützner et al., 2012). Predicted age and character of the sediments deposits need to be determined through sampling to understand in detail the evolution of the margin in response to climate changes.